

Technical note 2012/02

U-value templates

1 Introduction

JPA Designer version 5.03a2 introduces templates for U-value calculations. This technical note describes how to use and create templates to speed up U-value calculations, minimise repetitive work and build up your own library of commonly used calculations.

2 What is a U-value template?

A U-value template is a pre-completed U-value calculation which you can use as the basis for your own U-value calculation. A template contains the same information as a normal U-value calculation including element definitions, layers with bridging details and correction factors.

You can either use the template calculation 'as is' or use it as a starting point to produce your own calculation, but whichever route you chose, the calculation process will be quicker.

There are three types of U-value templates in JPA Designer:

- *standard templates for roofs, walls and floors*. These are generic calculations which can be adapted by changing materials and thicknesses.
- *manufacturers' templates*. A number of construction product manufacturers have supplied U-value templates for typical constructions featuring their products.
- *user-defined templates*. These are calculations which you have previously performed and then saved as a template.

Standard and manufacturers' templates are supplied with the program.

3 How to use a template

The controls for creating U-value calculations from templates are at the bottom of the **Project Manager** window (see Figure 1). To create a new U-value calculation from a template:

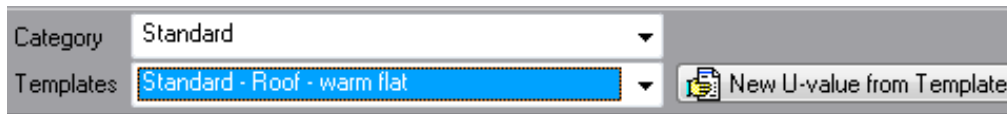


Figure 1: The template selection controls

1. Open **JPA Designer**.
2. In the **Categories** list select the *type* of template you want. That may be a manufacturer's category, one of the default categories, or a template group you have created previously.
3. In the **Templates** drop-down list pick the template you wish to use.
4. Click **New U-value from Template**. The **Description** dialogue opens.
5. You can edit the name of the template to one which is more suitable for your project, or you can accept the standard name. Once you are ready, click **OK**.
6. A new U-value calculation is added to the project.
7. You can now open and edit the calculation by double-clicking on its name in the **Project Manager** list.

4 Creating templates

You can create templates from your own U-value calculations by saving them in JPA Designer template files, which have the file extension JTF. You can have several different template files which allows you to sort the calculations into groups: you might have one for wall calculations and one for floor calculations, alternatively, you might divide them into masonry or timber framed calculations.

The simplest way to create a template file is to use the **Import U-value** feature to collect all the existing U-value calculations you want available into one project then save the project as a template file.

4.1 Importing existing calculations to a project

To import an existing U-value calculation to a project:

1. Start a new project in JPA Designer: on the **File** menu click **New**.
2. On the **File** menu click **Import U-value from another JPA Designer project**.
3. In the **Open** window select the file which contains the calculation.
4. At the **Import U-value from Project** dialogue (Figure 2)select the U-value calculation from the list and click **OK**.
5. The U-value calculation is added to the open project.
6. Repeat the process to import all calculations you want into the project.

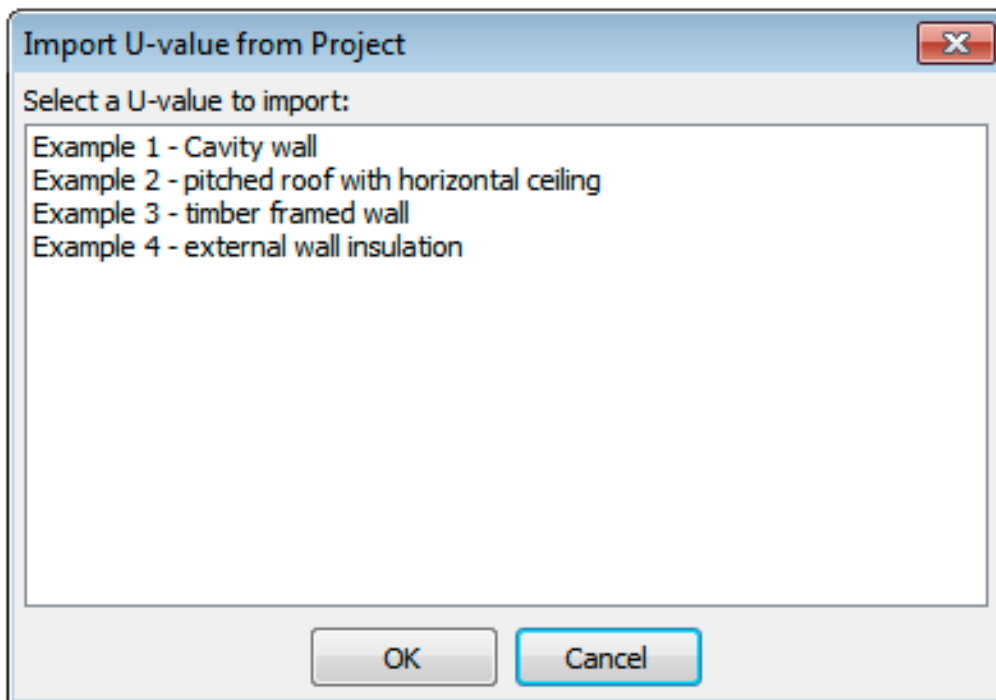


Figure 2: The Import U-value dialogue

You can, of course, create new calculations for the template if you want to.

4.2 Setting the project name

The name which appears in the **Categories** list is taken from the *project name* in the Project Manager window. So before you save a template file you should change the *project name* to something which will help you identify the calculations from the list (Figure 3). (The default *A Blank Project* will be no help at all a few weeks after you have created the template.)

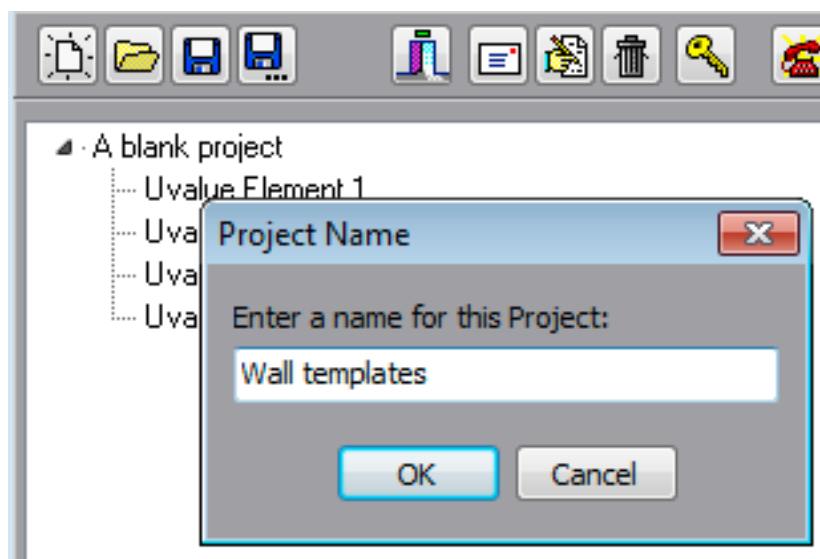


Figure 3: Changing the *project name*

To set the *project name*:

1. In the **Project Manager** window double click on the *project name* – the default value is *A blank project*.
2. In the **Project Name** dialogue type a new name for the project.

4.3 Saving the template file

The template file must be saved in the same folder as the other JPA Designer user data files and in the JTF format. To save a project as a template:

1. On the **File** menu click **Save Project as Template**.
2. Enter a *File name*.
3. Make sure **Save as type** is set to *JPA Designer U-value Template (JTF)* and click **OK**.
4. Your template project is now included in the **Categories** list.

5 Information for manufacturers

If you are a manufacturer of construction materials you can add U-value calculations which include your materials into the set of templates which is distributed with JPA Designer. Offering U-value calculations with your materials makes it easier for designers to include them in U-value calculations and specifications and helps to ensure the materials are included in calculations correctly.

The annual fee for distributing templates is¹:

- Up to ten template calculations: £75 + VAT.
- Up to twenty template calculations: £110 + VAT.
- Up to thirty template calculations: £140 + VAT

If you already subscribe to the U-value materials database the first ten template calculations are free of charge, and a further twenty calculations only costs £50 + VAT per year.

6 Further information

Information about JPA Designer may be found at <http://www.techlit.co.uk>².

Technical support enquiries by email only³ to

© JPA TL Ltd 2012

¹Prices correct at 15/06/2012, but subject to change. Please contact JPA TL Ltd for current pricing.

²<http://www.techlit.co.uk>

³<mailto:support@techlit.co.uk>